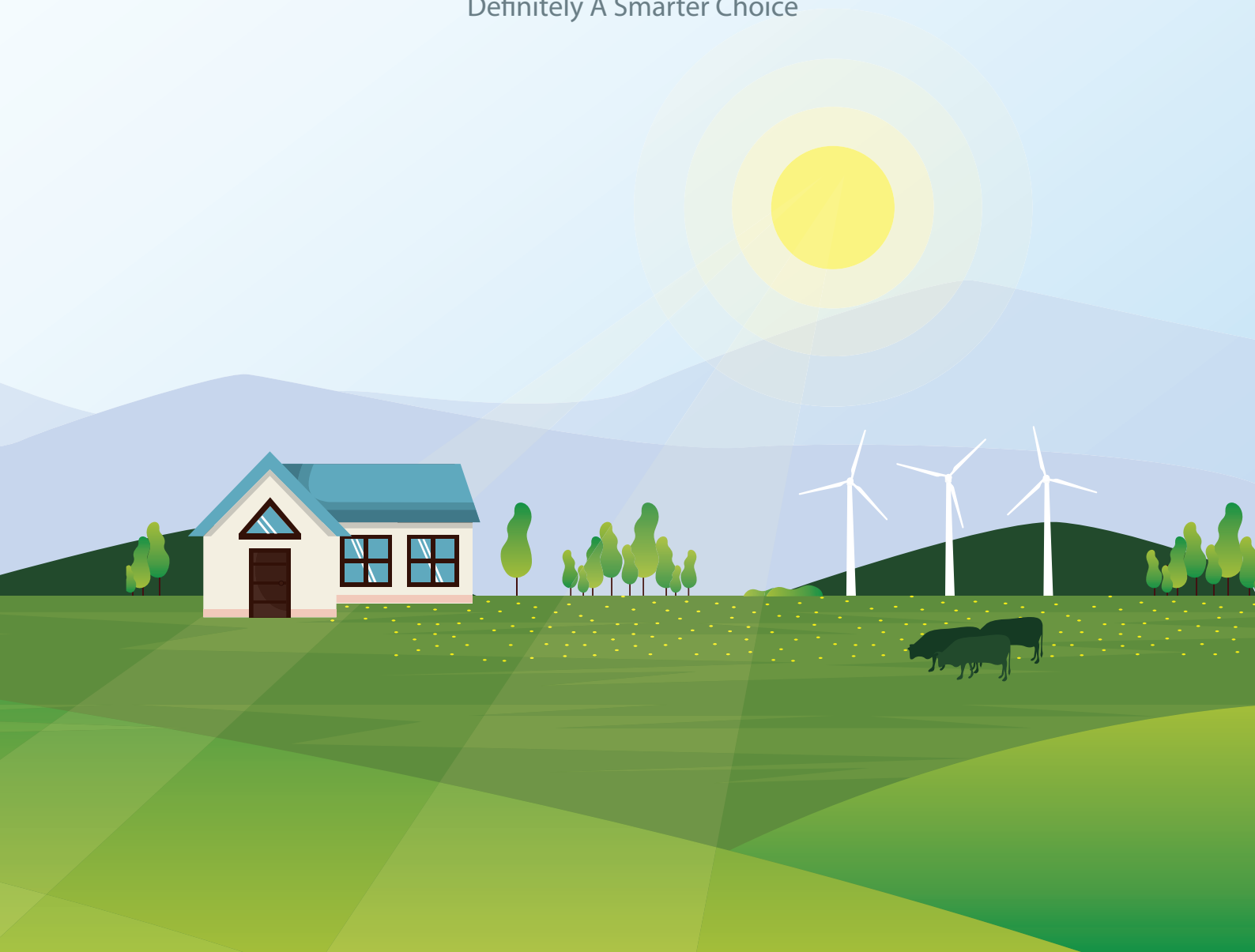


Kool Foil

INSULATION

Stay Cool, Save Energy, No Running Cost
Definitely A Smarter Choice

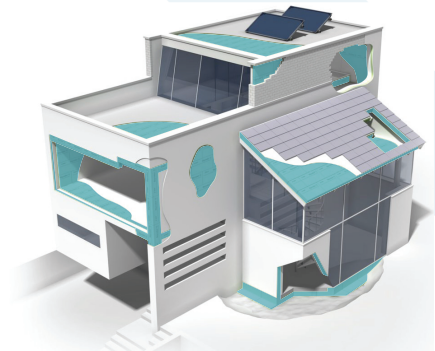
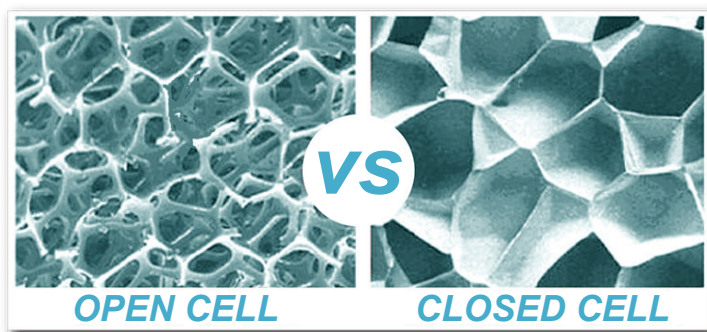


FoamX INSULATION BOARD

WHAT'S FOAMX INSULATION BOARD ?

FoamX insulation foam board is made from polystyrene resin and small amount of additives through heating and extruding system. It is a rigid foam with honeycomb structure. Owing to its 100% closed cell structure, it is highly moisture resistant and waterproof.

FoamX insulation foam board is widely used in wall insulation, inverted roof insulation, construction of concrete roof and structure of roof, flooring insulation, cold room construction, ground frost control under express highway, low temperature storage facilities, parking platform, airport runway, as core material of sandwich panels and other areas of moisture-proof in expensive decoration industry material.



General Specification

Colors: Blue, Pink, others

Compressive Strength: 150Kpa – 700Kpa

Length 1200mm – 6000mm

Width: 60mm – 1350mm

Edge: Flat (SS), Overlap Joint (SL), TG tenon type

Surface: Smooth skin, Rough skin, Line groove, embossing surface.

Advantages of FoamX Insulation Board

High Compressive Strength

Foam X insulation board is light-weight and the strength is up to 700kpa. The product is suitable for higher load of structure in the form of roofing, ground floor and wall for solution of thermal insulation.

Excellent Thermal Insulation

Foam X insulation board is low in thermal conductivity and the value is less than 0.028w/m.k. As the product is stable in performance, FoamX insulation board would be an excellent thermal insulation solution and best energy saving.

Light-Weight

FoamX insulation board comes with 30-40kg/m³ yet with high compressive strength. It's easy to carry and convenient for installation.

Anti-Chemical Corrosion

FoamX insulation won't be corroded with acid, water, salt, paint, cement, asphalt etc.

Anti-Microbial Corrosion

FoamX insulation board can be used on wall and ground floor for long without having to worry about microbial corrosion.

Recyclable

FoamX insulation board is made of plastic and even though it is not 100% degradable yet the product can be removed and re-used whenever needed anywhere and any place.

Water Resistance

Foam X insulation has very low water absorption rate as it's 100% closed cell materials. The thermal conductivity value won't be deteriorated even if the material is soaked in water for long time. The value of water absorption rate is less than 0.5%.

Warning

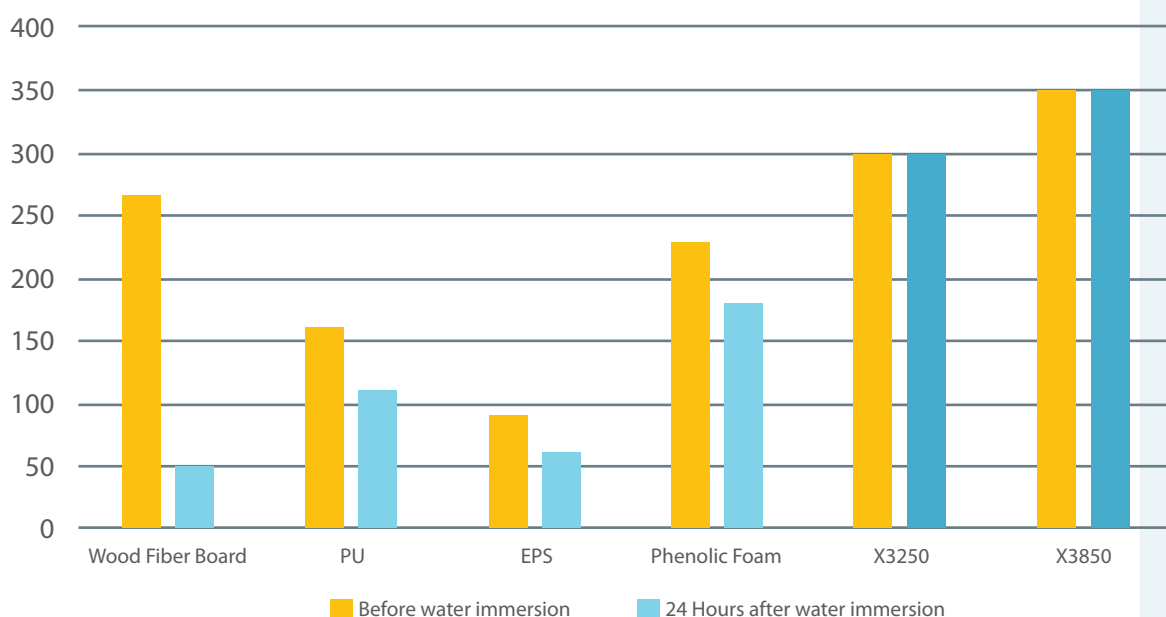
Working Temperature -50C – 75C

Prolong exposure to UV rays

Avoid direct contact with benzene, methane, fuel, heavy oil, polyester resin

Keep away from flame. Combustible items. Handle with care.

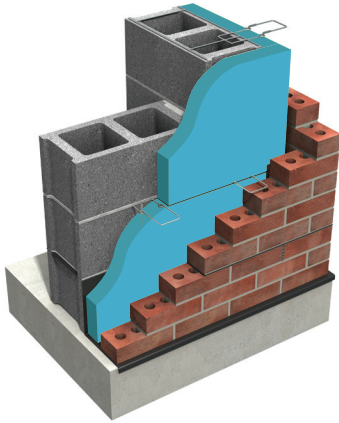
Compressive Strength Comparison (Kpa)



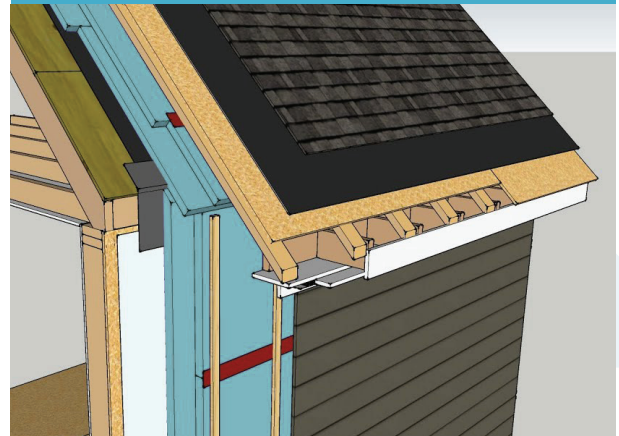
FoamX

Application

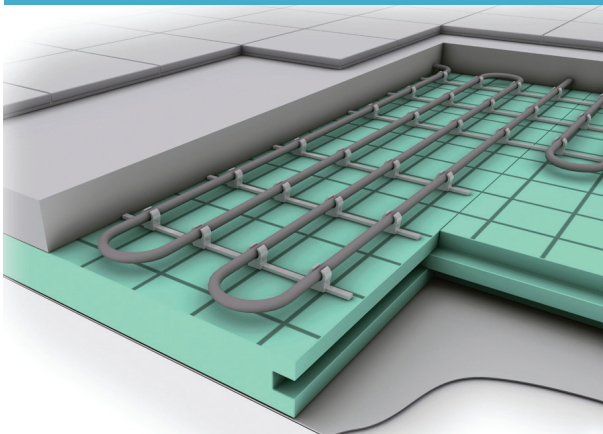
Wall Insulation



Inverted Roof



Flooring Insulation



Cold Room



PRODUCT: XPS3250 (1200*600*50mm)

No	Item	Performance Index	Results
1	Density (Kg/M3)	32.00	33.94
2	Compressive Strength(Kpa)	≥200	245
3	Water absorption,%volume fraction 【96h in water】	≤1.0	0.5
4	Water vapor permeability,ng/(m.s.Pa) 【23℃1℃ ,RH50% 5% 】	≤3.5	1.3
5	Thermal conductivity, W/(m.K) 【(Average temperature) 25℃】	≤0.033	0.032
6	Fire Performance	Class	B1,B2
7	Dimension	Width	600 mm
		Length	1200 mm
		Thickness	50 mm

The above test results comply with standard specification (GB / T10801.2 - 2002) Rigid extruded polystyrene foam board for thermal insulation.

PRODUCT: XPS3850 (1200*600*50mm)

No	Item	Performance Index	Results
1	Density (Kg/M3)	38.00	38.32
2	Compressive Strength(Kpa)	≥275	300
3	Water absorption,%volume fraction 【96h in water】	≤1.0	0.5
4	Water vapor permeability,ng/(m.s.Pa) 【23℃1℃ ,RH50% 5% 】	≤3.5	1.3
5	Thermal conductivity, W/(m.K) 【(Average temperature) 25℃】	≤0.033	0.032
6	Fire Performance	Class	B1,B2
7	Dimension	Width	600 mm
		Length	1200 mm
		Thickness	50 mm

The above test results comply with standard specification (GB / T10801.2 - 2002) Rigid extruded polystyrene foam board for thermal insulation.

Disclaimer : The information contained in this Test Report Sheet is the result of extensive laboratory testing performed on our products during standard production. The values given here are typical average values and are believed to be correct to the best of our knowledge, but users should not rely on them absolutely and must confirm their validity and suitability in each particular case.

PRODUCT: XPS3520 (1200*600*20mm)

No	Item	Performance Index	Results
1	Density (Kg/M3)	35.00	35.32
2	Compressive Strength(Kpa)	≥250	275
3	Water absorption,%volume fraction 【96h in water】	≤1.0	0.5
4	Water vapor permeability,ng/(m.s.Pa) 【23℃1℃ ,RH50% 5% 】	≤3.5	1.3
5	Thermal conductivity, W/(m.K) 【(Average temperature) 25℃】	≤0.033	0.032
6	Fire Performance	Class	B1,B2
7	Dimension	Width	600 mm
		Length	1200 mm
		Thickness	20 mm
The above test results comply with standard specification (GB / T10801.2 - 2002) Rigid extruded polystyrene foam board for thermal insulation.			

PRODUCT: XPS3025 (1200*600*25mm)

No	Item	Performance Index	Results
1	Density (Kg/M3)	30.00	33.94
2	Compressive Strength(Kpa)	≥200	245
3	Water absorption,%volume fraction 【96h in water】	≤1.0	0.5
4	Water vapor permeability,ng/(m.s.Pa) 【23℃1℃ ,RH50% 5% 】	≤3.5	1.3
5	Thermal conductivity, W/(m.K) 【(Average temperature) 25℃】	≤0.033	0.032
6	Fire Performance	Class	B1,B2
7	Dimension	Width	600 mm
		Length	1200 mm
		Thickness	25 mm
The above test results comply with standard specification (GB / T10801.2 - 2002) Rigid extruded polystyrene foam board for thermal insulation.			

Disclaimer : The information contained in this Test Report Sheet is the result of extensive laboratory testing performed on our products during standard production. The values given here are typical average values and are believed to be correct to the best of our knowledge, but users should not rely on them absolutely and must confirm their validity and suitability in each particular case.



FOAMX 1200mm width

Thickness	Thermal Conductivity	R-Value	Width	Length	Compressive Strength
mm	w/(m.k)	km2/w	mm	mm	kPa
30	0.028	1.07	600	1200	300
40	0.028	1.43	600	1200	300
50	0.028	1.78	600	1200	300
60	0.028	2.14	600	1200	300
70	0.028	2.50	600	1200	300
80	0.028	2.85	600	1200	300
90	0.028	3.21	600	1200	300
100	0.028	3.57	600	1200	300
110	0.028	3.92	600	1200	300
120	0.028	4.28	600	1200	300

FOAMX 600mm width

Thickness	Thermal Conductivity	R-Value	Width	Length	Compressive Strength
mm	w/(m.k)	km2/w	mm	mm	kPa
20	0.028	0.71	600	1200	200
30	0.028	1.07	600	1200	200
40	0.028	1.43	600	1200	200
50	0.028	1.78	600	1200	200
60	0.028	2.14	600	1200	200
70	0.028	2.50	600	1200	200
80	0.028	2.85	600	1200	200
90	0.028	3.21	600	1200	200
100	0.028	3.57	600	1200	200
110	0.028	3.92	600	1200	200
120	0.028	4.28	600	1200	200

FoamX[®]

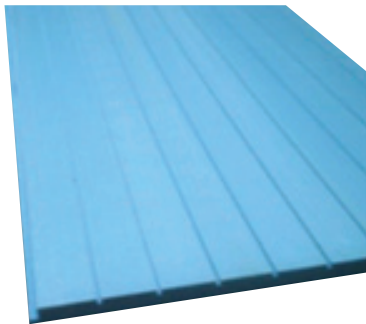
Type of skin surface



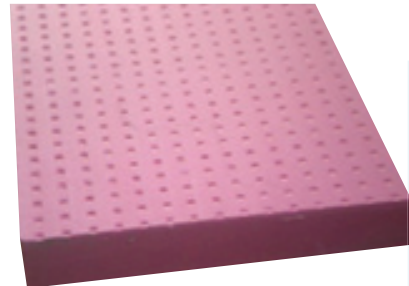
Smooth Surface



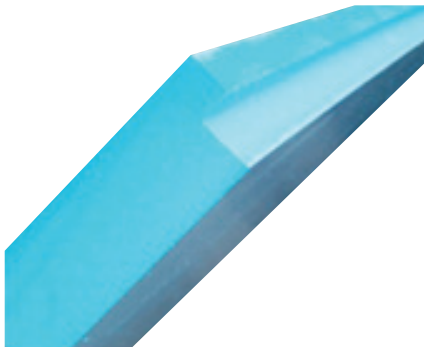
Rough Surface



Grooved Surface



Embossing Surface



SL Overlap Edge



TG Tenon Edge

FoamX

FoamX Installation



Kool Foil

INSULATION

Authorized Dealer

